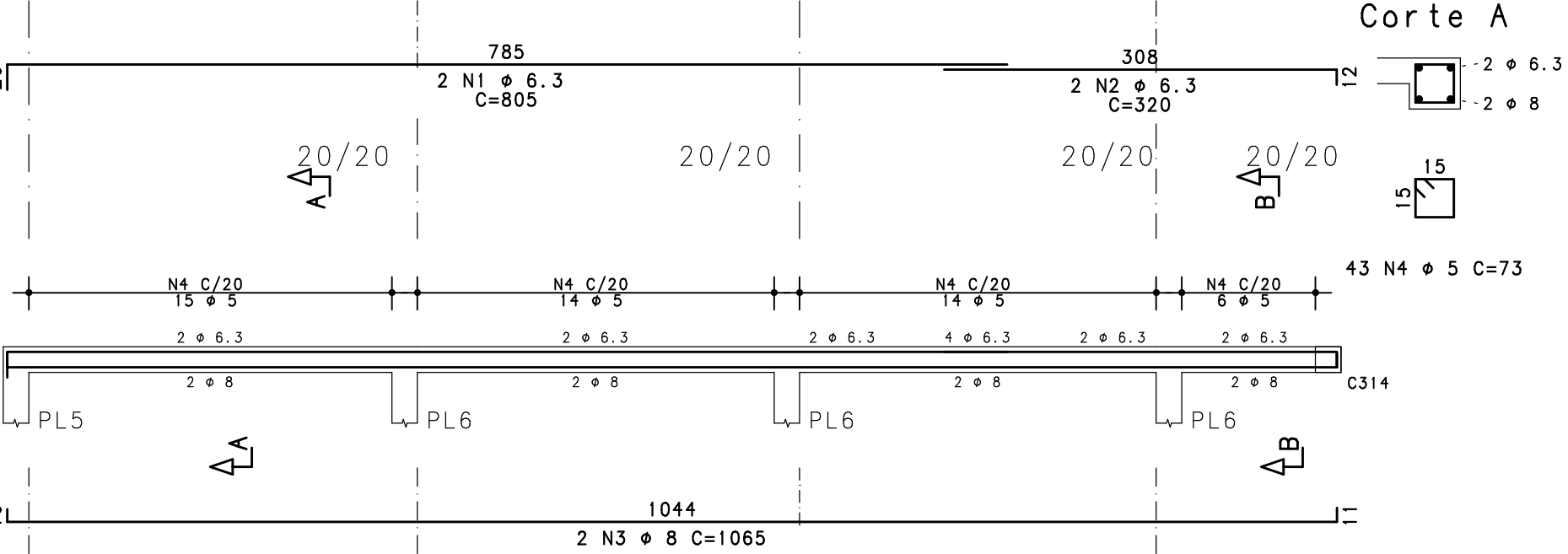


CORRESPONDÊNCIA DAS CORES - PARÂMETRO H (cm - mm)									
RED	YELLOW	GREEN	CYAN	BLUE	WHITE	MADEIRA	1.0	0.40	0.10
0.25	0.50	0.13	0.30	0.40	0.80				

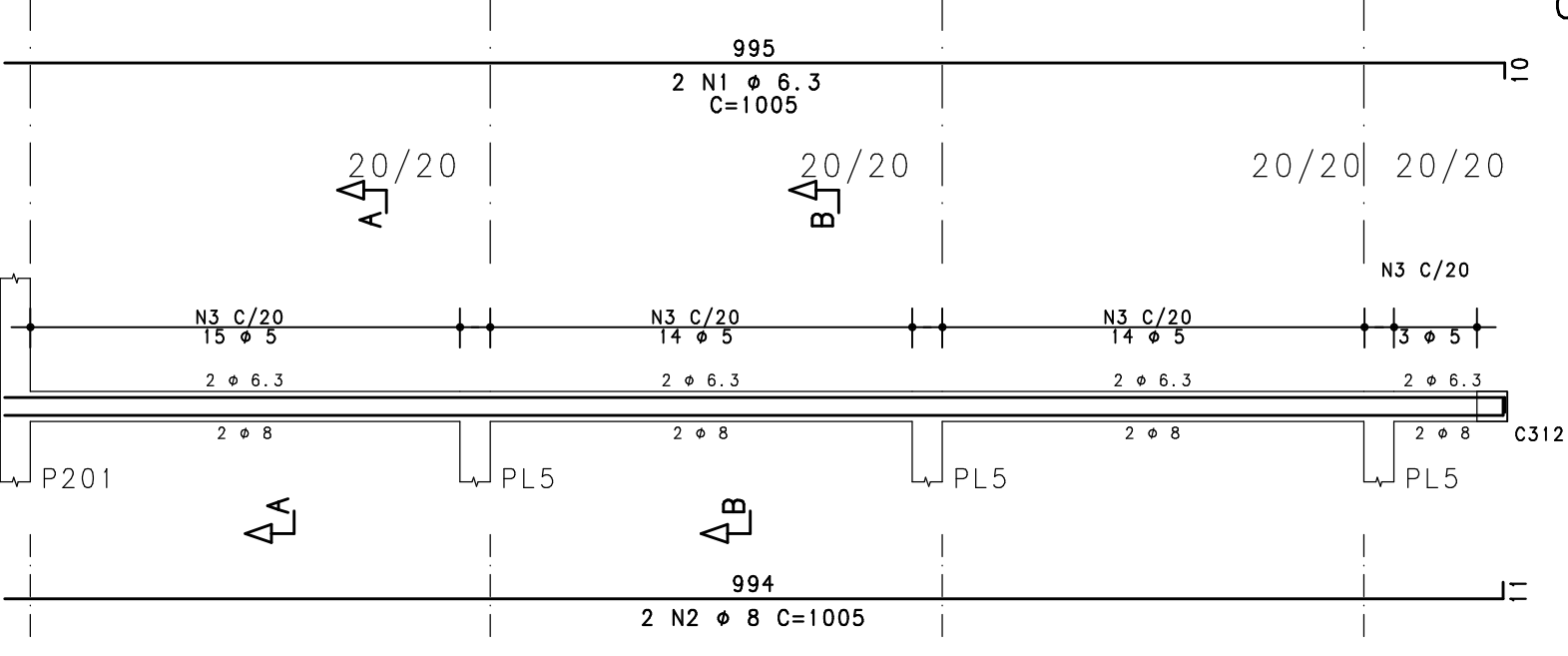
C301



Corte A

Corte B

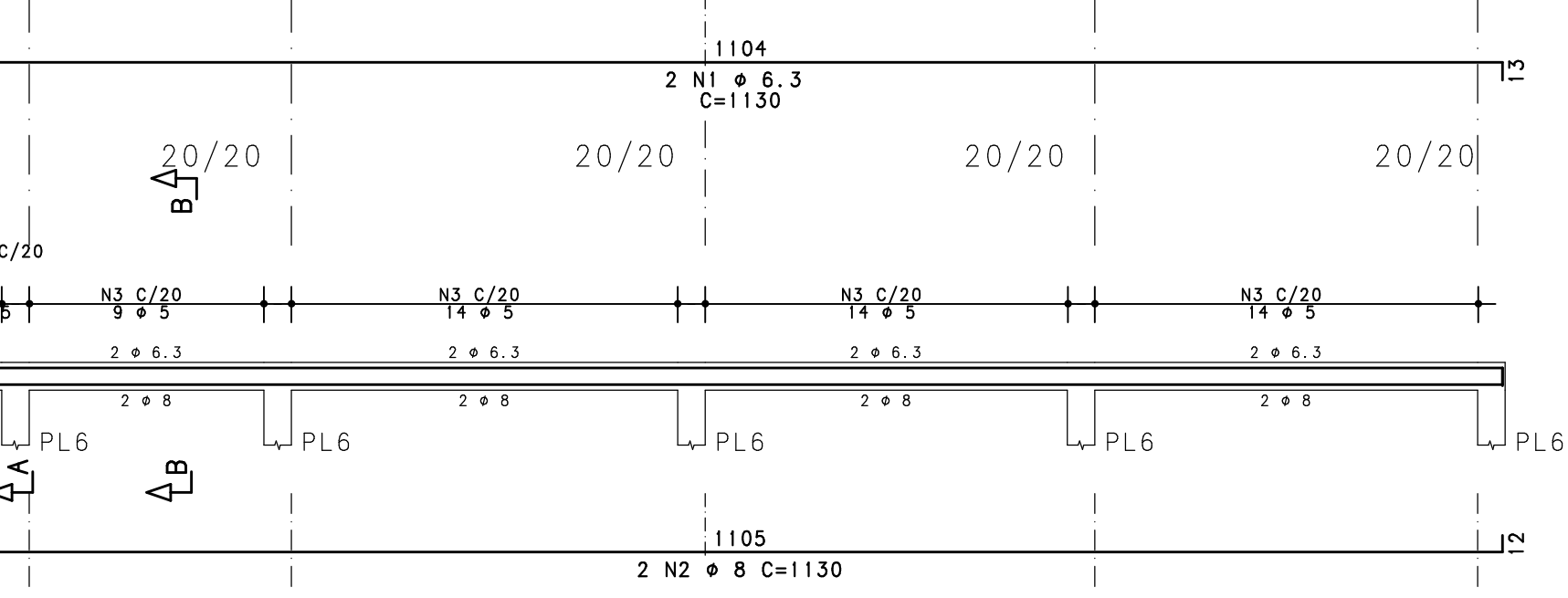
C302



Corte A

Corte B

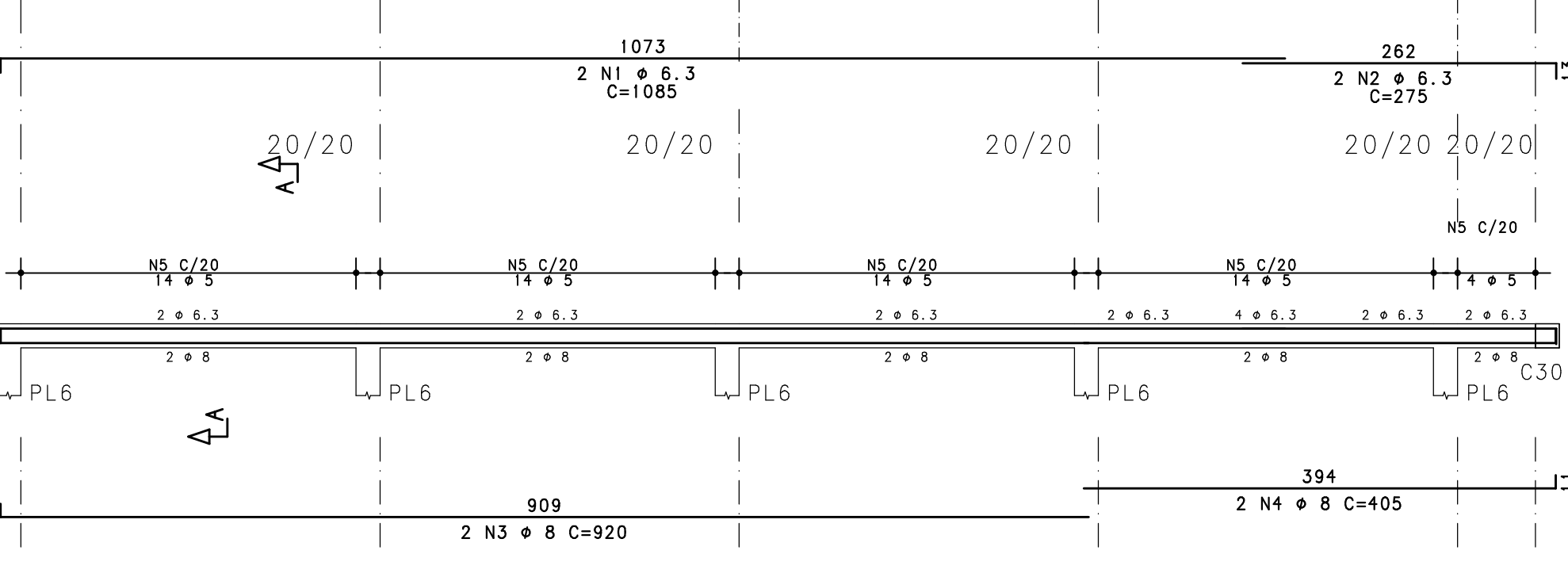
C313



Corte A

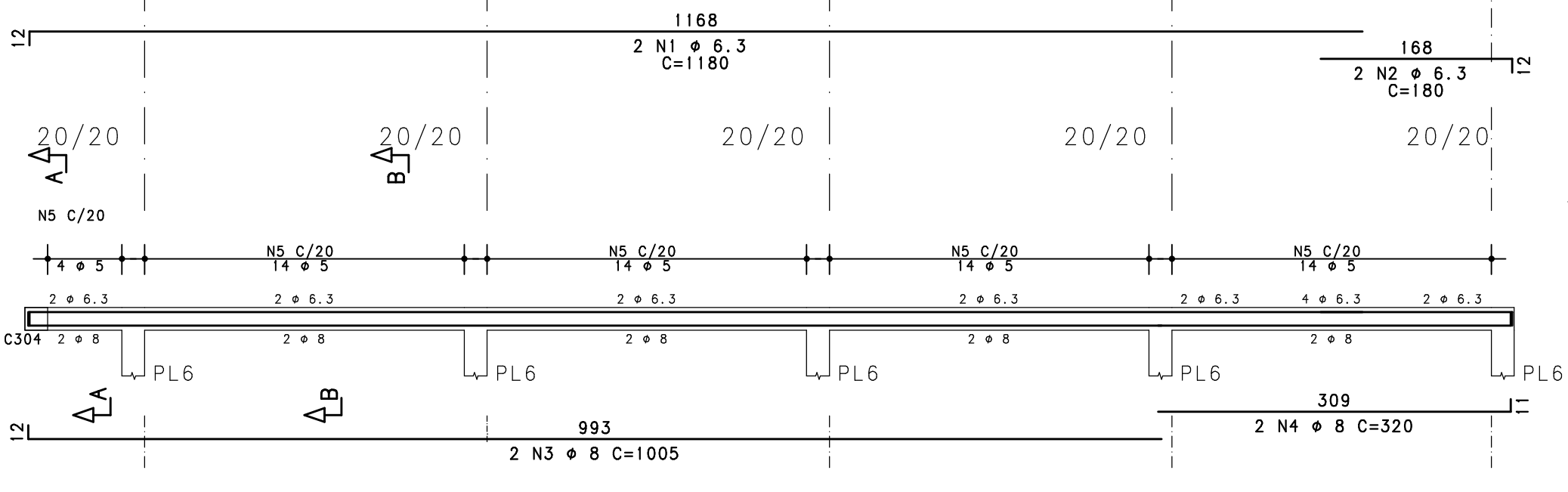
Corte B

C314



Corte A

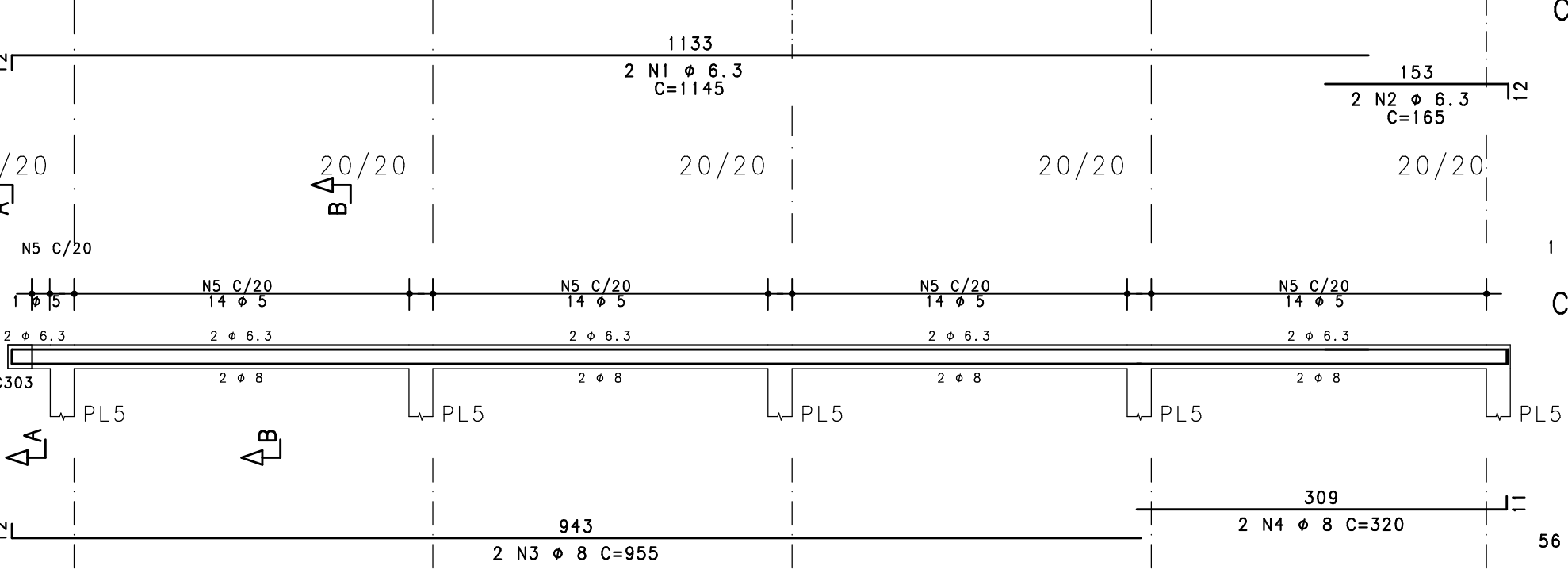
C305



Corte A

Corte B

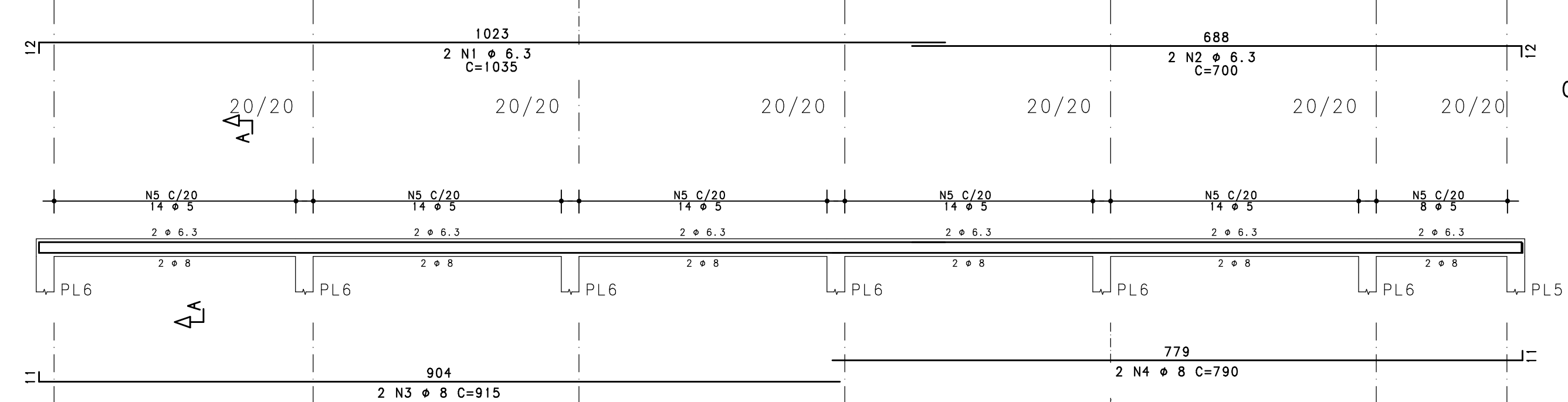
C307



Corte A

Corte B

C306



Corte A

ACO	POS	BIT	QUANT	COMPRIMENTO		
				UNIT	TOTAL	
		mm		cm	cm	
C301	50A	1	6.3	2	805	1610
	50A	2	6.3	2	320	640
	50A	3	8	2	1065	2130
	60A	4	5	49	73	3577
C302	50A	1	6.3	2	1005	2010
	50A	2	8	2	1005	2010
	50A	3	5	46	73	3358
	60A	3	5			
C305	50A	1	6.3	2	1180	2360
	50A	2	6.3	2	180	360
	50A	3	8	2	1005	2010
	50A	4	8	2	320	640
C306	60A	5	5	60	73	4380
	50A	1	6.3	2	1035	2070
	50A	2	6.3	2	700	1400
	50A	3	8	2	915	1830
C307	50A	4	8	2	790	1580
	60A	5	5	78	73	5694
	50A	1	6.3	2	1145	2290
	50A	2	6.3	2	165	330
C313	50A	3	8	2	955	1910
	50A	4	8	2	320	640
	60A	5	5	57	73	4161
	50A	1	6.3	2	1130	2260
C314	50A	2	8	2	1130	2260
	60A	3	5	52	73	3796
	50A	1	6.3	2	1085	2170
	50A	2	6.3	2	275	550
	50A	3	8	2	920	1840
	50A	4	8	2	405	810
	60A	5	5	60	73	4380

RESUMO DE AÇO			
ACO	BIT	COMPR	PESO
	mm	m	kgf
60A	5	293	45
50A	6.3	181	44
50A	8	177	70
Peso Total		60A =	45 kgf
Peso Total		50A =	114 kgf